

RESEARCH ARTICLE

Open Access



Hidden genomic features of an invasive malaria vector, *Anopheles stephensi*, revealed by a chromosome-level genome assembly

Mahul Chakraborty^{1†} , Arunachalam Ramaiah^{1,2,3†}, Adriana Adolphi⁴, Paige Halas⁴, Bhagyashree Kaduskar^{2,3}, Luna Thanh Ngo¹, Suvratha Jayaprasad⁵, Kiran Paul⁵, Saurabh Whadgar⁵, Subhashini Srinivasan^{3,5}, Suresh Subramani^{3,6,7}, Ethan Bier^{2,7}, Anthony A. James^{4,7,8} and J. J. Emerson^{1,9*}

Abstract

Background: The mosquito *Anopheles stephensi* is a vector of urban malaria in Asia that recently invaded Africa. Studying the genetic basis of vectorial capacity and engineering genetic interventions are both impeded by limitations of a vector's genome assembly. The existing assemblies of *An. stephensi* are draft-quality and contain thousands of sequence gaps, potentially missing genetic elements important for its biology and evolution.

Results: To access previously intractable genomic regions, we generated a reference-grade genome assembly and full transcript annotations that achieve a new standard for reference genomes of disease vectors. Here, we report novel species-specific transposable element (TE) families and insertions in functional genetic elements, demonstrating the widespread role of TEs in genome evolution and phenotypic variation. We discovered 29 previously hidden members of insecticide resistance genes, uncovering new candidate genetic elements for the widespread insecticide resistance observed in *An. stephensi*. We identified 2.4 Mb of the Y chromosome and seven new male-linked gene candidates, representing the most extensive coverage of the Y chromosome in any mosquito. By tracking full-length mRNA for > 15 days following blood feeding, we discover distinct roles of previously uncharacterized genes in blood metabolism and female reproduction. The Y-linked heterochromatin landscape reveals extensive accumulation of long-terminal repeat retrotransposons throughout the evolution and degeneration of this chromosome. Finally, we identify a novel Y-linked putative transcription factor that is expressed constitutively throughout male development and adulthood, suggesting an important role.

(Continued on next page)

* Correspondence: jje@uci.edu

†Mahul Chakraborty and Arunachalam Ramaiah contributed equally to this work.

¹Department of Ecology and Evolutionary Biology, University of California, Irvine, CA 92697, USA

⁹Center for Complex Biological Systems, University of California, Irvine, CA 92697, USA

Full list of author information is available at the end of the article



© The Author(s). 2021 **Open Access** This article is licensed under a Creative Commons Attribution 4.0 International License, which permits use, sharing, adaptation, distribution and reproduction in any medium or format, as long as you give appropriate credit to the original author(s) and the source, provide a link to the Creative Commons licence, and indicate if changes were made. The images or other third party material in this article are included in the article's Creative Commons licence, unless indicated otherwise in a credit line to the material. If material is not included in the article's Creative Commons licence and your intended use is not permitted by statutory regulation or exceeds the permitted use, you will need to obtain permission directly from the copyright holder. To view a copy of this licence, visit <http://creativecommons.org/licenses/by/4.0/>. The Creative Commons Public Domain Dedication waiver (<http://creativecommons.org/publicdomain/zero/1.0/>) applies to the data made available in this article, unless otherwise stated in a credit line to the data.

(Continued from previous page)

Conclusion: Collectively, these results and resources underscore the significance of previously hidden genomic elements in the biology of malaria mosquitoes and will accelerate the development of genetic control strategies of malaria transmission.

Keywords: *Anopheles stephensi*, Reference-quality assembly, Transposable elements, Insecticide resistance, Y chromosome, Malaria control, Blood feeding, Structural variation

Background

Mosquitoes transmit the largest number of arthropod vector-borne diseases (i.e., malaria, dengue, Zika, yellow fever, and Chikungunya) in humans and animals globally [1, 2]. The complex disease human malaria is caused by *Plasmodium* parasites, which are transmitted by female *Anopheles* mosquitoes [3]. Nearly 20 years ago, sequencing of the *An. gambiae* genome catalyzed rapid growth in genetics and genomics research in this important vector of sub-Saharan Africa [4–6]. However, the lack of comparable genomic resources in other malaria vectors has impeded progress in understanding and control of the spread of this deadly disease in other continents [7, 8].

Anopheles stephensi is the primary vector of urban malaria in the Indian subcontinent and the Middle East and an emerging malaria vector in Africa [9, 10]. The species is so invasive that without immediate control, it is predicted to become a major urban malaria vector in Africa, putting 126 million urban Africans at risk [11]. Genetic strategies (e.g., clustered regularly interspaced short palindromic repeats (CRISPR) gene drives) that suppress or modify vector populations are powerful means to curb malaria transmission [12, 13]. The success of these strategies depends on the availability of accurate and complete genomic target sequences and variants segregating within them [12, 14]. However, functionally important genetic elements and variants within them often consist of repetitive sequences that are either mis-assembled or completely missed in draft-quality genome assemblies [15, 16]. Despite being a pioneering model for transgenics and CRISPR gene drive in malaria vectors [13, 17], the community studying *An. stephensi* still relies on draft genome assemblies that do not achieve the completeness and contiguity of reference-grade genomes to reveal all the hidden genetic features [7, 18, 19]. In particular, this limitation obscures genes and repetitive genetic elements that are potentially relevant for understanding parasite transmission or for managing vector populations [20]. We therefore generated a high-quality reference genome for a laboratory strain UCISS2018 (see the “Materials and methods” section) of this mosquito sampled from the Indian subcontinent (Additional file 1: Figure S1) using deep coverage long reads plus Hi-C scaffolding and then annotated it by full-length mRNA sequencing (Iso-Seq). These

resources facilitate characterization of regions of the genome less accessible to previous efforts, including gene families associated with insecticide resistance, targets for gene-drive interventions, and recalcitrant regions of the genome rich in repeats, including the Y chromosome.

Results

A reference-grade assembly of *An. stephensi*

Anopheles stephensi has three major gene-rich chromosomes (X, 2, 3) and a gene-poor, heterochromatic Y chromosome (Fig. 1a) [18]. The size of the published most contiguous draft assembly of the *An. stephensi* genome was 221 Mb and had 23,371 scaffolds with N50 of 1.59 Mb, meaning that half of the assembly is found in scaffolds < 1.59 Mb (Additional file 1: Table S1) [18]. The longest scaffold of this assembly was 5.9 Mb and 11.8 Mb of gaps in the assembly was filled with Ns. In the new reference assembly, the major chromosomes are represented by just three sequences (scaffold N50 = 88.7 Mb; contig N50 = 38 Mb; N50 = 50% of the genome is contained within sequence of this length or longer), making this assembly comparable to the *Drosophila melanogaster* reference assembly, widely considered a gold standard for metazoan genome assembly [22] (Fig. 1b, Table 1, Additional file 1: Figures S4 and S5, Additional file 1: Table S1). The new reference assembly has 89% (205/235 Mb) of the estimated *An. stephensi* physical haploid genome assigned to chromosomes, which parallels the assembly completeness of *An. gambiae* where 88% (230/265 Mb of physical genome size) of the assembled genome is placed into chromosomes (see the “Materials and methods” section) (Fig. 1).

The new *An. stephensi* assembly recovers 99.2% of 3285 complete single copy Diptera orthologs (i.e., Benchmarking Universal Single Copy Orthologs or BUSCOs) [23]. The reference assembly of the *D. melanogaster* genome captures 99.1% of BUSCOs, indicating that their completeness is comparable (Table 1, Additional file 1: Figure S5, Additional file 1: supplementary text). The new *An. stephensi* assembly not only achieves significant improvements over the existing draft assembly (1044-fold and 56-fold increase in contig N50 and scaffold N50, respectively, and a 97% reduction in assembly gaps), but it is also more contiguous and complete than

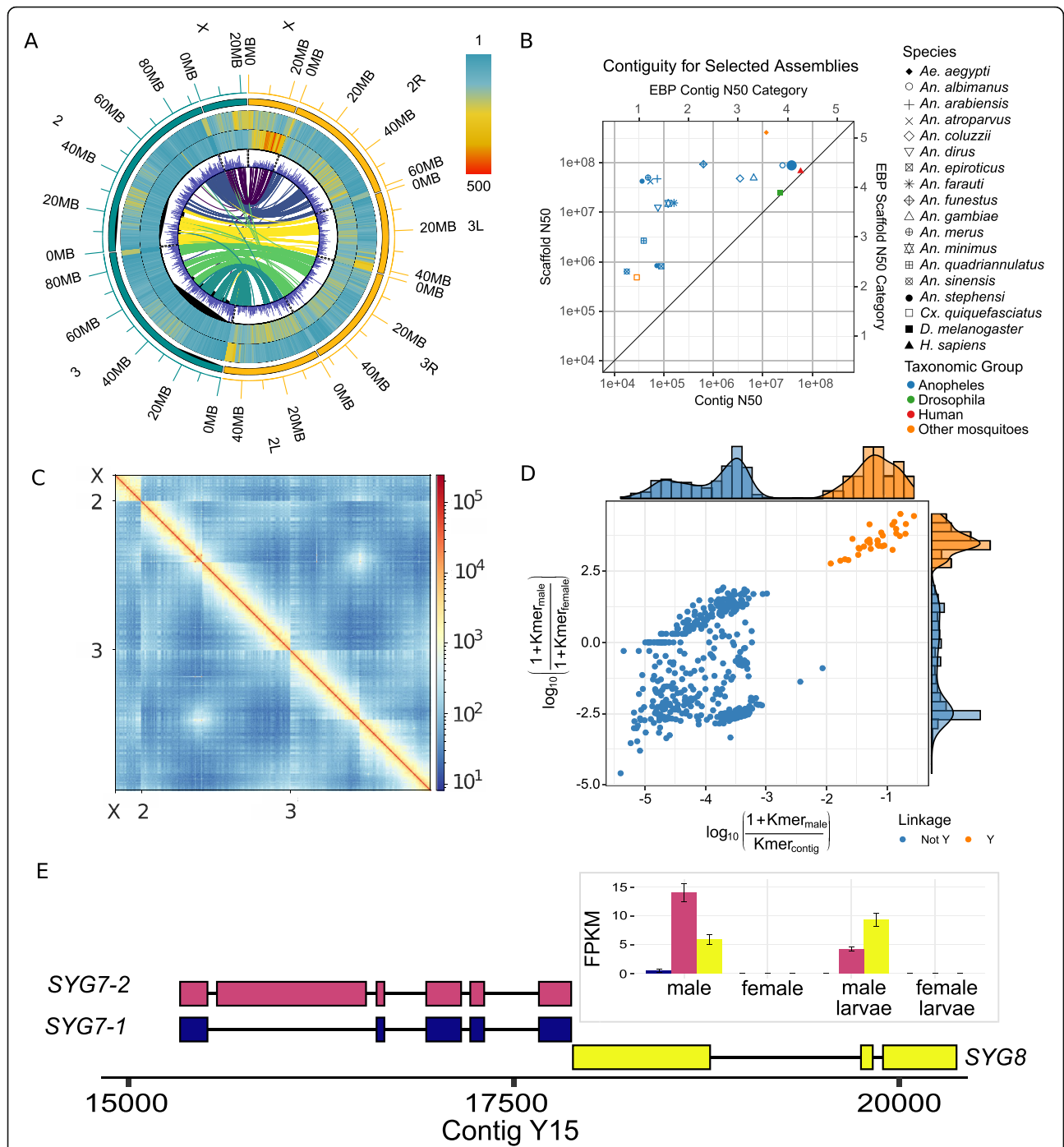


Fig. 1 *Anopheles stephensi* genome assembly. **a** Distribution of repeats, gene content, and synteny between *An. stephensi* (left, green) and *An. gambiae* (right, yellow) genomes. Each successive track from outside to inside represents TE density, satellite density (Additional file 1: Figures S2 and S3), and gene density across the chromosome arms in 500-kb windows. The innermost track describes the syntenic relationship between *An. stephensi* and *An. gambiae* chromosome arms. **b** Contiguities of published genome assemblies of *Anopheles* malaria vectors, *Culex*, *Aedes aegypti*, human (GRCh38.p13), and the model organism *D. melanogaster*. Among the mosquito vectors, *An. stephensi* assembly reported in the current study is the only genome that matches the Earth BioGenome Project (EBP) standard of the human and the *Drosophila* genomes [21]. **c** Hi-C contact map of the *An. stephensi* scaffolds. The density of Hi-C contacts is highest at the diagonals, suggesting consistency between assembly and the Hi-C map. **d** Identification of putative Y contigs using the density of male-specific k-mers on the x-axis and the ratio of male and female k-mers on the y-axis. **e** Transcripts of *SYG7* and *SYG8*, two new Y-linked genes as revealed by the uniquely mapping Iso-seq reads. *SYG7* has two isoforms. Inset: transcript abundance of *SYG7* and *SYG8* in male and female adults and larvae. As shown here, neither gene is expressed in females

Table 1 Summary of genome assembly and annotation statistics

Genomic features	Value
Total length (bp)	250,632,892
Contig number	566
Contig N50 (bp)	38,117,870
Scaffold number	560 [^]
Scaffold N50 (bp)	88,747,609*
L50	2
GC content (%)	44.91%
Maximum scaffold length	93,706,523
Minimum scaffold length	1727
N's per 100 kb	3.60
Alternative haplotypes, bp (# scaffolds)	15,743,318 (169)
Unclassified contigs, bp (# scaffolds)	20,118,109 (355)
Putative Y chromosome, bp (# scaffolds)	2,431,719 (33)
3 major chromosomes X, 2, and 3, bp (# scaffolds)	205,167,748 (3)
Predicted genes	14,966
Predicted transcripts	16,559
5' UTR	9791
3' UTR	9290
tRNAs	503

[^]Except three major chromosomes, we kept others as contigs; *Scaffold N50 is the length of chr3

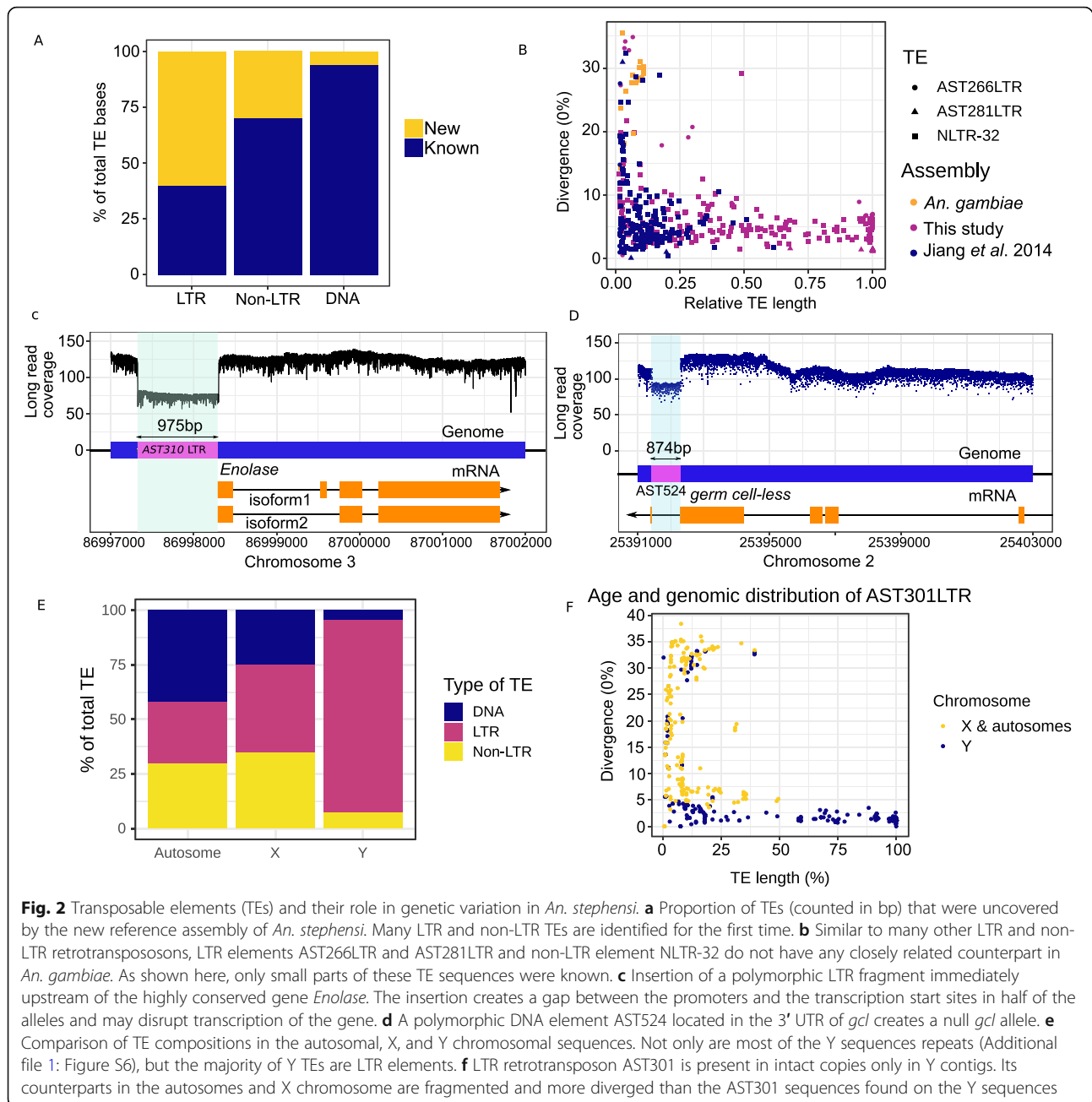
the latest versions of published assemblies of *Anopheles* species (single copy BUSCOs 93.7–98.9%) [7, 18, 19], including the extensively studied African malaria vector, *An. gambiae* (AgamP4) genome (BUSCO 97.4%, contig N50 = 85 kb, scaffold N50 = 49 Mb), arguably the best characterized genome among malaria vectors (Fig. 1a, Table 1, Additional file 1: Table S1, Additional file 1: Figures S3 and S5) [7, 20, 24–27]. Furthermore, the concordance of short reads mapped to the assembly suggests that assembly errors are rare (short read consensus quality value or QV = 49.2, or ~ 1 discrepancy per 83 kb), which is further supported by uniformly mapping long reads and a high-resolution Hi-C contact map (Fig. 1c, Table 1, Additional file 1: Figure S1). Among the mosquito vectors, the *An. stephensi* assembly reported here is the genome that matches most closely the standards achieved by the human and the *Drosophila* genomes (Fig. 1b) and is the only *Anopheles* genome to meet the standards of the Earth BioGenome Project (EBP) [21] for both contiguity and accuracy.

Furthermore, assessment of annotation showed that 92% of genes are annotated with < 0.5 annotation edit distance (AED), which surpasses the recommended score (> 90%) for gold standard annotations (Campbell et al.) [115]. The Pfam content score (65.4%) is also above the recommended range 55–65%, indicating that

the *An. stephensi* proteome is well annotated. Comparison of gene model annotations of our assembly with the draft assembly showed that 24.4% of 14,966 genes were unique in our assembly. An additional 1429 genes in our assembly were split over > 1 contig in the older most contiguous *An. stephensi* assembly [18]. Collectively, such evidence suggests that our assembly recovered previously unassembled functional genome sequences. We also assembled 33 putative Y contigs totaling 2.4 Mb, representing the most extensive Y chromosome sequence yet recovered in any *Anopheles* species [28] (Fig. 1d to f) [7, 18, 28]. Finally, to assist disease interventions using endosymbionts [29], we assembled de novo the first complete genome of the facultative endosymbiont *Serratia marcescens* from *Anopheles* using sequences identified in the *An. stephensi* long read data (Additional file 1: Figure S4).

Transposable elements

As naturally occurring driving genetic elements, transposable elements (TEs) are invaluable for synthetic drives [30, 31] and transgenic tools [17, 32, 33]. Although TEs comprise 11% (22.5 Mb) of the scaffolded *An. stephensi* genome, the most contiguous published draft assembly [18] contains 32% or 7.2 Mb less TE sequences, the majority of which (61% or 4.4 Mb) are composed of previously unknown LTR retrotransposons (Fig. 2a). The proportion of absent TE sequences in the draft assembly resembles the share of TE sequences missed by short reads-based TE detection [15]. Most full-length LTR and non-LTR retrotransposons we identified were either absent or fragmented in the existing draft genome assembly (Fig. 2a, Additional file 1: Figure S2, Additional file 2: Table S2). Some of these TEs are likely strain-specific and are absent from the strain sequenced previously [18]. The newly identified TEs include species-specific and evolutionarily recent retrotransposons, which highlight the dynamic landscape of new TEs in this species and provide a resource for modeling the spread of synthetic drive elements (Fig. 2b). The *An. stephensi* genome possesses fewer TEs and satellites than *An. gambiae*, partly accounting for the difference in their genome size and composition of the pericentric regions (Fig. 1a, Additional file 1: Figures S2 and S3). The difference in repeat density between the two species is particularly prominent on the X chromosome, which also carries disproportionately higher abundance of TEs and satellites among the three major chromosomes ($p < 2.2e-16$, proportion test for equal TE content) (Fig. 1a, Additional file 1: Figure S2). Although most (98% of 24.8 Mb) TEs are located within introns and intergenic sequences [34], we observed 1368 TE sequences in transcripts of 8381 Iso-Seq supported genes,



68% (939/1368) of which were not found in the earlier assembly [18] (Additional file 3: Table S3).

Due to the low, but measurable, level of residual heterozygosity in the sequenced strain (Additional file 1: Figure S1; “Materials and methods” section), we discovered several segregating TEs (Additional file 1: Figure S6, Additional file 4: Table S4), some of which likely have functional consequences. For example, a 975-bp LTR fragment inserted immediately at the 5' end of the *Enolase* gene (*Eno*) may perturb its transcription (Fig. 2c). In *D. melanogaster*, null mutants of *Eno* show severe fitness and phenotypic defects that range from

flightlessness to lethality [35], whereas reduction in *Eno* expression protects *Drosophila* from cadmium and lead toxicity [36]. Because *Eno* is highly conserved between *An. stephensi* and *D. melanogaster* (88% of 441 amino acids are identical between the two), we anticipate that this structural variant (SV) allele of *Eno* might be deleterious, although it also could confer some degree of resistance to heavy metal toxins. Another TE, a 874-bp DNA element, is inserted into the 3' UTR of the gene *germ cell-less* (*gcl*), the *Drosophila* ortholog of which determines germ cell development [37] (Fig. 2d). All full-length Iso-Seq reads from this gene are from the

non-insertion allele, suggesting that the insertion allele is a *gcl* null.

Structural features and newly discovered genes of the Y chromosome

Targeting Y-linked sequences can be the basis for suppressing vector populations [38]. We identified 33 putative Y contigs using a k-mer-based approach (Fig. 1d). We experimentally validated three unique sequences spread across three contigs using PCR, which confirmed the male specificity of the predicted Y sequences (see the “Materials and methods” section). In contrast to the autosomes and the X chromosome, 72% of the Y sequences (1.7 Mb) comprise LTR elements (Fig. 2e, Additional file 1: Figure S6). While most full-length LTR elements in the Y chromosome also are present in the other chromosomes, a 3.7-kb retrotransposon, AST301, is represented by 46 highly similar (< 2.5% divergent) full-length copies only in the Y sequences. Its matching sequences elsewhere in the genome are vestigial and evolutionary distant, consistent with AST301 being primarily active in the Y chromosome (Fig. 2f). The proliferation of AST301 may be a consequence of the Y chromosome’s lack of recombination, which can lead to irreversible acquisition of deleterious mutations in a process called Muller’s ratchet [39].

Despite the high repeat content, we uncovered seven Y-linked genes that are supported by multiple uniquely mapping Iso-Seq reads (Additional file 1: Figure S7, Additional file 5: Table S5). We also recovered the three previously identified Y-linked genes and filled sequence gaps in *Syg1* [40]. Two of the newly discovered Y-linked genes (*Syg7* and *Syg8*) sit in a cluster of three overlapping Y-linked genes, all of which show strong expression in male larvae and adults but no expression in larval or adult females (Fig. 1, e and f). Y-linkage of these genes is also confirmed by PCR (see the “Materials and methods” section). Both genes show low or absent expression in the early (0–2 h) embryos but are expressed in the later stages (> 4 h) (Additional file 1: Figure S7). Translation of open reading frames from *Syg7* transcripts shows the presence of a myb/SANT-like domain in Adf-1 (MADF) domain in the encoded protein (Additional file 1: Figure S7).

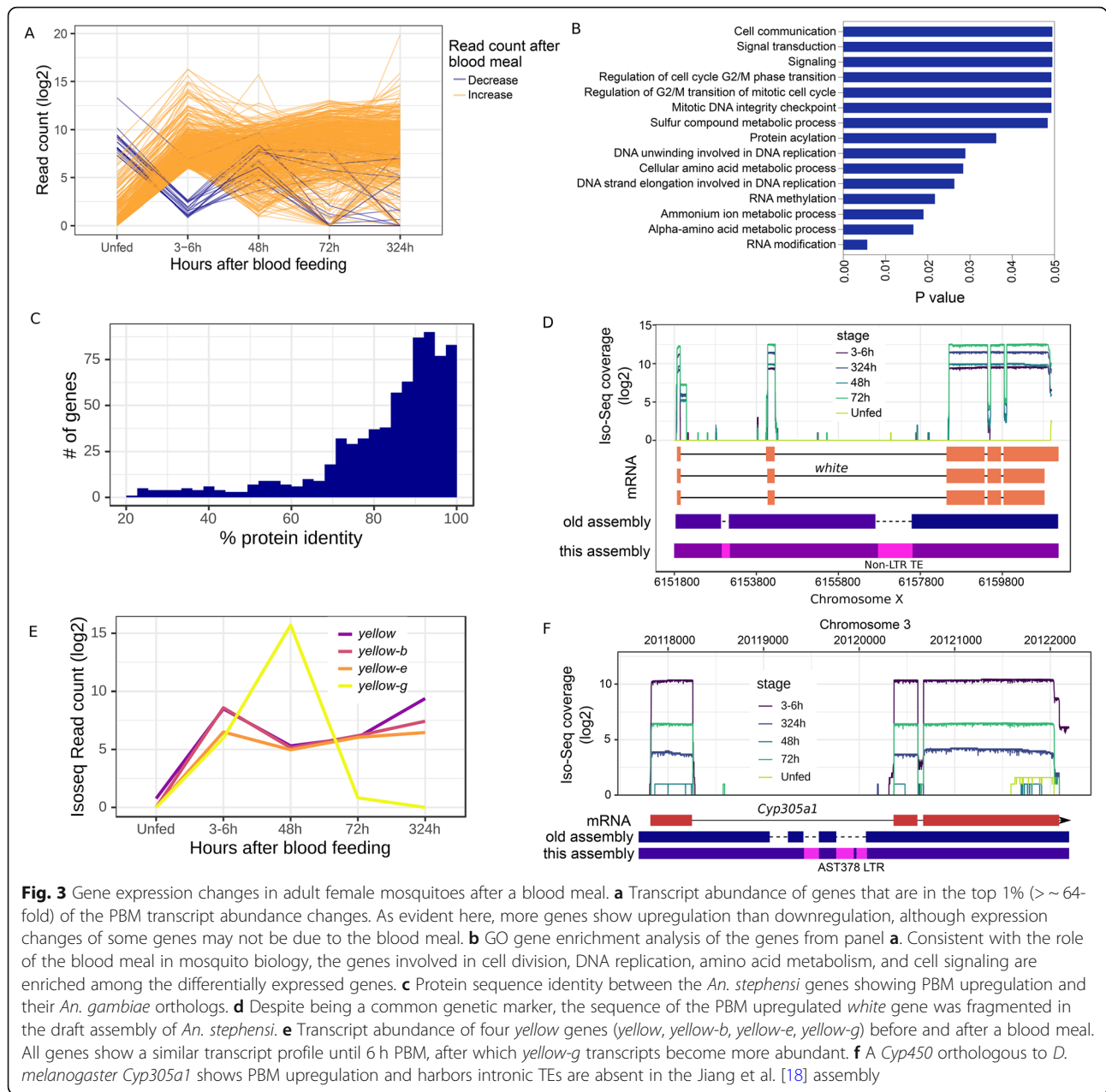
Transcriptional response to blood feeding

An alternative to suppression schemes aimed at reducing mosquito numbers is the modification of mosquito populations to prevent them from serving as parasite vectors. Promoters induced in females by blood feeding can be repurposed to express effector molecules that impede malaria parasite transmission [41, 42]. Following a blood meal, hundreds of genes are induced, many of which stay upregulated for days after the blood meal (Fig. 3a,

Additional file 6: Table S6). When ranked by expression-fold changes post blood meal (PBM), the top 1% of genes with most strongly affected expression (representing a > 64-fold change) include 593 genes enriched for involvement in DNA replication, cell division, amino acid metabolism, and signaling within and between cells (Fig. 3b). Comparison of protein sequences of the upregulated genes and their orthologs in *An. gambiae* suggest that most genes are relatively conserved (70% share > 80% identity) (Fig. 3c). This suggests that the genes likely retained similar functions in the two species. However, sequences of 19.3% (115/593) of these genes are either fragmented or unannotated in the draft *An. stephensi* assembly [18] (Additional file 7: Table S7). For example, the eye pigmentation gene *white*, a key genetic marker in a wide range of insects and showing upregulation following a blood meal, was fragmented in the draft assembly due to the presence of an 853-bp intronic non-LTR retrotransposon (Fig. 3d). Similarly, despite the active roles of blood-inducible and constitutively expressed protease genes encoding trypsins and chymotrypsins in digestion and metabolism of blood [43, 44], not all of their complete sequences in *An. stephensi* were known before this study (Additional file 7: Table S7).

A Yellow protein gene (*yellow-g*) that was shown previously to be essential for female reproduction in *An. gambiae* and was used as a target in a CRISPR gene drive [45] was found to be upregulated PBM. Yet, neither *yellow-g* nor the three other members of the Yellow protein gene family (*yellow-b*, *yellow-e*, *yellow*) that showed PBM elevated transcript levels were previously annotated (Fig. 3e) [44]. Although transcript levels of all four genes increase in tandem until 6 h PBM, the *yellow-g* transcript level continues to climb until 48 h PBM and then reverts to the pre-BM level (Fig. 3e). In contrast, the other three *yellow* genes maintain a similar transcript level even after 13 days (Fig. 3e). The PBM upregulation patterns of the four yellow genes in *An. stephensi* are consistent with roles in female reproduction, although *yellow-b*, *yellow-e*, and *yellow* are probably required longer than *yellow-g*. Interestingly, a Cytochrome P450 monooxygenase (*Cyp450*) gene, which bears similarity to *D. melanogaster Cyp305a1*, also was upregulated (Fig. 3f). *Cyp305a1* acts as an epoxidase in the juvenile hormone biosynthesis pathway and helps maintain intestinal progenitor cells in *D. melanogaster* [46]. PBM upregulation of *Cyp305a1* suggests that it may have a potential role in cellular homeostasis in the midgut after a blood meal [47].

The *cis*-regulatory elements of the blood-meal-inducible genes can be combined with antimicrobial peptide genes to explore new effector molecule candidates to block malaria parasite transmission [41]. The new assembly revealed 361 immune-related genes, 103



of which were either previously unknown or broken in the previous assembly [18]. Among the immune-related genes, 15 genes were upregulated and are among the top 1% PBM upregulated genes (Additional file 6: Table S6). The immunity genes also included 20 putative antimicrobial peptides (AMP), three of which (GENE_00013347, GENE_00002217, GENE_00011093) were not known before (Additional file 1: supplementary text, Additional file 1: Figure S8, Additional file 8: Table S8). GENE_00013347 encodes for *Cecropin-A*, ortholog of which in *An. gambiae* protects against infections to Gram-negative and Gram-positive bacteria, fungi, and yeasts [48] and the malaria parasite *Plasmodium berghei*

[49]. The AMPs and other immunity genes we identified provide a rich arsenal of effector molecule candidates for transgenic interventions to impair *Plasmodium* transmission in *An. stephensi*.

Insecticide resistance genes

In Asia and eastern Africa, *An. stephensi* populations show widespread resistance to dieldrin, DDT, malathion, and pyrethroids [50–52]. Insecticide resistance in these populations has been attributed to various cytochrome p450s, esterases, GABA receptors (*resistance to dieldrin* or *rdl*), and voltage-gated sodium channels (*knock-down resistance* or *kdr*) [53]. Frequently, amino acid changes

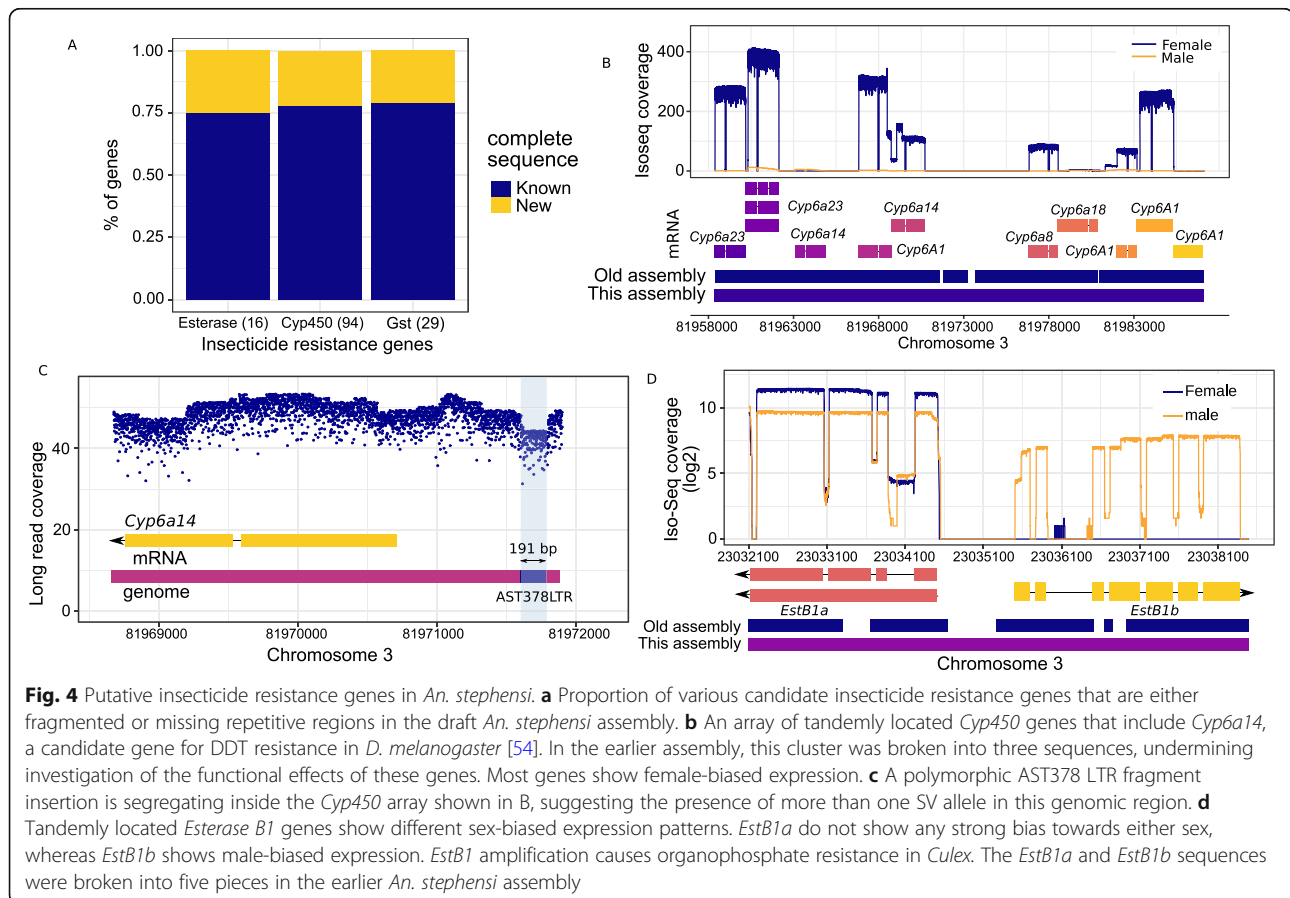
in *rdl* and *kdr* and copy number increases of Cyp450s, esterase (Est), and glutathione S-transferases (*GST*) have been associated with the resistance phenotypes [51, 53].

We identified 94 Cyp450, 29 *GST*, and 16 esterase genes, including 2 acetylcholine esterases (*ace-1* and *ace-2*), providing a comprehensive resource for discovery and delineation of the molecular basis of insecticide resistance (see the “Materials and methods” section). Sequences of 22% (31/139) of these genes were either fragmented or missing in the draft assembly (see the “Materials and methods” section) (Fig. 4, a and b) [18]. We also recovered the complete *kdr* sequence and discovered 8 transcript isoforms of this gene (Additional file 1: Figure S9). A polymorphic TE insertion immediately downstream of *kdr* suggests that TE insertions play an important role in genetic variation in insecticide resistance candidate genes (Additional file 1: Figure S9). We also resolved tandem arrays of insecticide resistance genes, as evidenced by a 28-kb region consisting of Cyp450s similar to *D. melanogaster* *Cyp6a14*, *Cyp6a23*, *Cyp6a8*, *Cyp6a18*, and *Musca domestica* *Cyp6A1* (Fig. 4b). In *D. melanogaster*, *Cyp6a14* is a candidate gene for DDT resistance [54], suggesting a similar function for its *An. stephensi* counterpart. One *Cyp6a14* in the array has

a polymorphic 191-bp LTR TE fragment inserted 1 kb upstream of the 5’ end of the transcription start site, implying the presence of more than one SV allele in this complex region (Fig. 4c). We also resolved previously fragmented tandem copies of *Esterase B1* (*Est-B1a* and *Est-B1b*) counterparts, which have been shown in *Culex quinquefasciatus* to provide resistance to organophosphates [55] (Fig. 4d). Interestingly, the Cyp450s in the array and *Est-B1b* show opposite sex-biased expression, suggesting that the molecular basis of insecticide resistance may differ between sexes (Fig. 4d).

Discussion

Despite being an important malaria vector in Asia and an emerging vector in Africa, the existing genome assemblies of *An. stephensi* remain fragmented and incomplete. We improved the genetic resources for this species by assembling a highly contiguous de novo reference genome that recovers sequences relevant to the biology and evolution of the species missing in previous drafts. We found that the genome of *An. stephensi* is actively shaped by species-specific TEs, which likely comprise a major source of genetic variation. Given the generally known strongly deleterious effects of TE



insertions [56, 57], the presence of potentially functionally relevant polymorphic TE insertions, even in an inbred laboratory strain, indicates that individually rare TE mutations could play a major role in the variation in phenotype and fitness of *An. stephensi* natural populations.

Even though the Y chromosome plays an important role in male biology and sexual conflicts, its highly repetitive nature poses steep challenges for assembly and molecular characterization of the Y chromosome in *Anopheles* [7, 8, 18, 28, 40, 58]. Due to the improved Y representation in our assembly, we characterized the repeat and gene content that previously evaded scrutiny. The enrichment and persistence of full-length LTR retrotransposons on this chromosome, relative to the autosome and the X chromosome, indicate an important role of these TEs in degeneration and heterochromatinization of the Y [18]. Moreover, we annotated at least seven previously undiscovered genes on the *An. stephensi* Y chromosome, suggesting that the paucity of Y-linked genes described in the *Anopheles* genus is due in part to technical limitations, rather than only the degeneration of the Y. While the biological functions of these genes remain unknown, one (*Syg7*) contains a MADF DNA-binding domain found in certain *D. melanogaster* transcription factors [59], suggesting it is a male-specific transcription factor. Thus, the Y sequences we uncovered provide insights into the contribution of Y towards the differences between the two sexes in *An. stephensi*.

In female *Anopheles* mosquitoes, blood meals initiate a cascade of physiological and molecular events involving hormone and signaling pathways, protein digestion and metabolism, gut homeostasis, and egg development. Our results uncovered several genes that show distinct patterns of regulation PBM, underscoring their respective roles in these processes. For example, persistence of the *yellow-g* transcript for days after a blood meal is consistent with its role in eggshell integrity in both *Drosophila* and *An. gambiae* [60, 61]. On the other hand, Cytochrome P450s, like *Cyp305a1*, play roles in hormone signaling and mediate intestinal homeostasis necessary for reproduction [62]. Thus, the new assembly, combined with the tracking of full-length transcripts, revealed the components of the complex biological network that are activated by a blood meal in this species. Further experiments using replicated transcript data will provide a comprehensive view of the effect of blood meal on *An. stephensi* biology.

The spread of insecticide resistance in Asian and African *An. stephensi* populations have made identification of insecticide-resistant mutations an urgent priority [50, 53, 63, 64]. We have uncovered TE insertions in the insecticide resistance gene *kdr*, which is generally investigated only for amino acid variants [65, 66]. TE insertions

in the vicinity of a gene can influence its expression due to its epigenetic silencing effect on the expression of nearby genes [67]. The TE insertion at *kdr* could potentially affect *kdr* expression, contributing to functional variation that would go unnoticed by studies focusing on amino acid variation. Additionally, as we have shown here, candidate genes for insecticide resistance are often present in clusters of tandem copies that are difficult to resolve without a contiguous and error-free assembly. These regions are also segregating for repetitive structural variants (SV), indicating that SVs in repetitive genomic regions could contribute to functional genetic variation implicated in insecticide resistance in *An. stephensi* [68]. Evidently, such assemblies would be key to the detection of causal SV mutations for insecticide resistance [15, 20].

Conclusion

CRISPR and gene drive-based strategies promise to transform the management of disease vectors and pest populations [69]. However, safety and effectiveness of these approaches rely on an accurate description of the functional and fitness effects of the genomic sequences and their variants [12, 70]. Draft assemblies are poorly suited for this purpose because they miss repetitive sequences or genes that are central to the vector's biology and evolution. Incomplete information about the correct copies or sequence of a gene may mislead conclusions about functional significance of the gene or the target sequence [15] and may lead to mistargeting or misuse in a gene drive. The *An. stephensi* reference assembly mitigates these problems, revealing previously invisible or uncharacterized structural and functional genomic elements that shape various aspects of the vector biology of *An. stephensi*. Additionally, functionally important SVs are segregating even in this inbred lab stock, indicating a significant role of structural genetic variation in phenotypic variation in this species. Finally, recent advances in technology have sparked enthusiasm for sequencing all eukaryotes in the tree of life [21]. The assembly we report here is timely, as it constitutes the first malaria vector to reach the exacting reference standards called for by these ambitious proposals, and will stand alongside established references like those for human and fruit flies (Fig. 1b). This new assembly of *An. stephensi* provides a comprehensive and accurate map of genomic functional elements and will serve as a foundation for the new age of active genetics in *An. stephensi*.

Materials and methods

Mosquitoes

Anopheles stephensi mosquitoes of a strain (UCISS2018) from the Indian subcontinent (gift of M. Jacobs-Lorena, Johns Hopkins University) [71] were maintained in

insectary conditions (27 °C and 77% humidity) with a photoperiod of 12 h light:12 h dark including 30 min of dawn and dusk at the University of California, Irvine (UCI). Larvae were reared in distilled water and fed ground TetraMin® fish food mixed with yeast powder. Adults had unlimited access to sucrose solutions (10% wt/vol) and females were provided with blood meals consisting of defibrinated calf blood (Colorado Serum Co., Denver) through the Hemotek® membrane feeding system. We established an isofemale line from the colony and inbred the line by sib mating for 5 generations prior to sequencing.

Genome sequencing

Genomic DNA from 70 adult male and female mosquitoes was extracted using the Qiagen Blood & Cell Culture DNA Midi Kit following the previously described protocol [72]. The genomic DNA was sheared with 10 plunges of size 21 blunt needles, followed by 10 plunges of size 24 blunt end needles. We generated our PacBio reads using 31 SMRTcells on the RSII platform (P6-C4 chemistry) at the UC San Diego Genomics Core and 2 SMRTcells on Sequel I platform at Nucleome (Hyderabad, India). From the same genomic DNA, we also generated 3.7 GB of 300-bp paired-end reads at the UC San Diego genomics core and 32.37 GB of 150-bp paired-end Illumina reads from Nucleome. To identify the Y-linked contigs, we generated 27.8 GB and 28.5 GB 100 bp paired-end Illumina reads from male and female genomic DNA, respectively, at UCI Genomics High-Throughput Facility (GHTF).

RNA extraction and sequencing

Total RNA was extracted from a total of six samples prepared from pooled individuals: 5–7-day-old sugar-fed males, 5–7-day-old sugar-fed females, and blood-fed females 3–6 h, 24 h, 48 h, and 72 h after feeding. The male pool consisted of 15 individuals, while female pools comprised 10 individuals each. All samples were isolated from the same mosquito cage. To do so, sugar-fed male and female samples were collected, and a blood meal offered for 1 h. Unfed females were removed from the cage and blood-fed females retrieved at each of the indicated time points. At the time of collection, samples were immersed in 500 µL of RNeasy RNA Stabilization Reagent (Qiagen) and stored at 4 °C. Total RNA was extracted using the RNeasy Mini Kit (Qiagen) following the manufacturer's instructions for the Purification of Total RNA from Animal Tissues. Extracted samples were treated with DNA-free Kit (Ambion) to remove traces of genomic DNA. Finally, samples were cleaned using the RNA Clean & Concentrator Kit (Zymo Research). mRNA selection, cDNA synthesis, and Iso-Seq library prep were performed at UCI GHTF following the

manufacturer's (Pacific Biosciences) protocol. For each of the six samples, one SMRTcell of Iso-seq reads was generated on the Sequel I platform.

Genome assembly

We used 42.4 GB or 180× of long reads (assuming haploid genome size $G = 235$ Mb) to generate two draft assemblies of *An. stephensi* using Canu v1.7 [73] and Falcon v2.1.4 [74]. Falcon was used to assemble the heterozygous regions (Additional file 1: Figure S1) that were recalcitrant to Canu. We filled the gaps in the Canu assembly using the Falcon primary contigs following the two-steps merging approach with Quickmerge v0.3, where the Canu assembly was used as the reference assembly in the first merging step [72, 75]. The resulting assembly was processed with finisherSC (v2.1) to remove the redundant contigs and to fill the further gaps with raw reads [76]. This PacBio assembly (613 contigs, contig N50 = 38.1 Mb, 257.1 Mb in total) was polished twice with Arrow (smrtanalysis v5.2.1) and twice with Pilon v1.22 using ~400X (80 Gb) 150 bp PE Illumina reads from our three Illumina datasets [77].

Identification of polymorphic mutations

To identify the variants segregating in the sequenced strain, we aligned the alternate haplotype contigs (a_ctg.fa) identified by Falcon to the scaffolded assembly. Then we called the indels using SVMU v0.2 (Structural Variants from MUMmer). An indel was marked as a TE based on its overlap with the Repeatmasker annotated TEs. To estimate heterozygosity, we mapped the Illumina reads to the chromosome scaffolds using Bowtie2 (v2.2.7) and converted the alignments to a sorted bam file using SAMtools (v1.9). A VCF file containing the SNPs and small indels were generated using freebayes (v1.3.2-40-gccec27fc), and pairwise nucleotide diversity (π) was calculated over 25-kb windows using vcftools (vcftools --window-pi 25,000; v0.1.14v0.1.14).

Microbial sequence decontamination

Microbial contigs in the assembly were identified using Kraken v2.0.7-beta [78] (Additional file 1: supplementary text) [79–82], which assigned taxonomic labels to the 613 contigs (Additional file 1: Figure S4). Kraken mapped k-mers (31–35 nt default) from the 613 contig sequences against the databases from the six domain sets: bacteria, archaea, viral, UniVec_Core, fungi, and protozoa from National Center for Biotechnology Information (NCBI) and the genome sets including representative reference mosquito from VectorBase v2019-02 and *Drosophila* genomes ($n = 24$; Additional file 1: Table S9). The databases map k-mers to the lowest common ancestor (LCA) of all genomes known to contain a given k-mer. The Kraken label for each contig was further

classified as either *Anopheles*, contaminating (non-*Anopheles*), or unclassified (no hit in the database) (Additional file 1: Figure S4). To prevent false positives in the results, low-complexity sequences in the assembly were masked with dustmasker (blast v2.8.1) [83] prior to running Kraken. The mitochondrial genome of *An. stephensi* was identified by aligning the existing mitogenome (GenBank No. KT899888) against the contigs using nucmer in MUMmer v4.0.0b [84].

Scaffolding

To de novo scaffold the microbial decontaminated 566 contigs (Additional file 1: supplementary text) [85–89], we collected HiC data from adult male and female mosquitoes filled up to the 1 ml mark of a 1.5-ml Eppendorf tube. We flash-froze the adult mosquitoes and sent them to Arima Genomics (San Diego) to generate a HiC library using the Arima kit. This library was sequenced on a single flow cell of an Illumina HiSeq 2500 instrument, generating 326 GB of Illumina 150-bp paired-end reads. We mapped the HiC reads to the *An. stephensi* contigs using Juicer v1.5.6 [90] and used the resulting contact map to scaffold the contigs using 3D-DNA v180922 [91]. The order and orientation of the three chromosomes were examined by nucmer in MUMmer v4.0.0b alignment of 20 gene/probe physical map data (X, 5 probes; 2, 7; 3, 8) generated from fluorescence in situ hybridization (FISH) on polytene chromosomes (Additional file 1: Figure S10; Additional file 9: Table S10) [18] against Hi-C chromosome assemblies. The aligned probes showed 83–100% sequence identities to our assembly, confirming the chromosome nomenclature we used based on synteny (Additional file 1: Figure S10, Additional file 9: Table S10).

QV estimation and assembly statistics

To estimate the error rate in our final assembly, we mapped the paired-end Illumina reads to the assembly using bwa mem (bwa v0.7.17-5). The alignments were converted to bam format and then sorted using SAMtools (v.1.8-11). We called the variants using freeBayes v0.9.21 [92] (command: freebayes -C 2 -O -q 20 -z 0.10 -E 0 -X -u -p 2 -F 0.75) and followed the approach of [73] to calculate QV ($10^{*\log_{10}(2981/250,632,892)}$). Briefly, we counted the number of bases comprising homozygous variants in the assembly (2981) and then divided it by the total mapped bases that had a coverage of at least three (250,632,892). We used QUAST v5.0.3 to obtain assembly statistics [93]. Out of 250 Mb, 205 Mb (82%) was scaffolded into the three chromosome-length scaffolds that correspond to the three *An. stephensi* chromosomes (chrX, 22.7 Mb; chr2, 93.7 Mb; chr3, 88.7 Mb). We identified 66 unplaced contigs as alternate haplotigs (66 contigs = 7.2 Mb) using mummer

alignments of contigs to the major chromosomes. Additionally, 103 (8.6 Mb) of 458 (35.9 Mb) unplaced or unclassified contigs were identified as alternate haplotigs using BUSCO v4.1.4 Diptera odb10 dataset [23] and the software Purge_dups v1.0 [94] (Table 1) (Additional file 10: Table S12). The final Hi-C map was visualized using HiCExplorer v3.4.2 [95]. We estimated the proportion of scaffolded haploid genomes using the publicly available resources on *An. stephensi* and *An. gambiae* genome size [96, 97]. The C value of *An. stephensi* is 0.24 and that of *An. gambiae* is 0.27. Based on the odds ratio of the genome sizes of the two species estimated from their C values and the *An. gambiae* genome size (265 Mb), we inferred the genome size for *An. stephensi* to be ~235 Mb.

Repeat annotation

We created a custom TE library using the EDTA (Extensive *de-novo* TE Annotator) pipeline [98] and RepeatModeler v2.0.0 (<http://www.repeatmasker.org/RepeatModeler/>) to annotate the TEs. LTR retrotransposons and DNA elements were identified de novo using EDTA, but because EDTA does not identify non-LTR retrotransposons, RepeatModeler was used to identify these. The two libraries were combined and the final library was used with RepeatMasker (v4.0.7) to annotate the genome-wide TEs. Tandem repeats were annotated using Tandem Repeat Finder v4.09 [99]. The number and copy number of micro-, mini-, and macro-satellites spanning in each 100-kb non-overlapping window of the three chromosomes were identified. The satellite classification was made as described in [18]. In brief, tandem repeats were classified as micro- (1–6 bases), mini- (7–99 bases), and macro- (≥ 100 bases) satellites. Mini- and macro-satellites were considered only if they had a copy number of more than 2. All these three simple repeats were considered only if they had at least 80% sequence identity, and set some cutoff (≥ 2 copy number; $\geq 80\%$ identity) to screen high confidence repeats, then the overall abundance was calculated.

Annotation using Iso-Seq

In total, six samples (5 females, 1 male) of *An. stephensi* mosquitoes were used for Iso-Seq sequencing (see the “RNA extraction and sequencing” section). Raw PacBio long-molecule sequencing data was processed using the SMRT analysis v7.0.0 Iso-Seq3 pipeline [100]. Briefly, CCS was used to generate the full-length (FL) reads for which all 5'-end primer, polyA tail, and 3'-end primer have been sequenced and then Lima was used to identify and remove the 5'- and 3'-end cDNA primers from the FL reads. The resulting bam files were processed with Iso-Seq3 to refine and cluster the reads, which were polished with Arrow. This de novo pipeline outputs

FASTQ files containing two sets of error-corrected, full-length isoforms: (i) the high-quality set contains isoforms supported by at least two FL reads with an accuracy of at least 99% and (ii) the low-quality set contains isoforms with an accuracy < 99% that occurred due to insufficient coverage or rare transcripts. The high-quality isoforms were collapsed with Cupcake v10.0.1 and were used in Talon v5.0 for annotation [101]. We combined the high-quality isoforms with other lines of evidence using MAKER2 v2.31.10 to create a final annotation (see below).

MAKER annotation

The final annotation of the genome was performed using MAKER2 v2.31.10 [102], which combines empirical evidence and ab initio gene prediction to produce final annotations. We used MAKER2 for three cycles of gene predictions. First, the Iso-Seq data were used as evidence for training MAKER2 for gene predictions. We also used transcriptome and peptide sequence data from *An. gambiae* (PEST4.12) and *An. funestus* (FUM0Z 3.1) as alternative evidence to support the predicted gene models. Prior to gene annotation, repeats were masked using RepeatMasker included in MAKER2. Mapping of EST and protein evidence to the genome by MAKER2 using BLASTn and BLASTx, respectively, yielded 12,324 genes transcribing 14,888 mRNAs. The output of first round gene models were used for the second round, where MAKER2 ran SNAP and AUGUSTUS for ab initio gene predictions. Next, another round of SNAP and AUGUSTUS predictions were performed to synthesize the final annotations that produced 14,966 genes, transcribing 16,559 mRNAs. In total, we identified 56,388 exons, 9791 5'-end UTRs, 9290 3'-end UTRs, and 503 tRNAs (Table 1; see the “Materials and methods” section). We also predicted ab initio an additional 14,192 mRNAs/proteins but due to weak support they were not considered. The final MAKER annotation was assessed using recommended AED and Pfam statistical metrics.

The gene models were functionally annotated in MAKER2 v2.31.10 through a homology BLAST search to UniProt-Sprot database, while the domains in the annotated proteins were assigned from the InterProScan database (Additional file 1: supplementary text). We compared our gene model annotations with the draft assembly using OrthoFinder v2.3.7 [103]. The GO enrichment analysis was performed in PANTHER v15.0 using PANTHER GO-SLIM Biological Process annotation data set [104]. Further, the orthologous top 1% of *An. stephensi* upregulated gene protein sequences in *An. gambiae* were identified by OrthoFinder v2.3.7.

Validation and quantification with RNAseq and Iso-Seq

To quantify transcript abundance using Iso-seq reads, raw reads were mapped to the genome assembly using

minimap2 [105] and the gene-specific transcript abundance was measured using bedtools, requiring that each Iso-seq read overlaps at least 75% of gene length annotated with TALON v5.0 (bedtools coverage -mean -F 0.75 -a talon.gff -b minimap.bam) [106]. To take variation due to sequencing yield per SMRTcell into account while calculating transcript abundance, Iso-seq coverage of each gene was divided by a normalization factor, which was calculated by dividing the total read counts for each sample by the total read counts from the unfed female sample. To identify the genes up- or downregulated due to blood feeding, we compared the transcript abundance of 5–7-day-old adult females before and after blood meal. To identify the genes whose expressions are most strongly affected by blood meal, we rank-ordered transcript abundance differences for all genes showing non-zero transcript abundance in either of the two samples. Here we reported the genes that are in the top 1% of the transcript level differences which corresponds to all genes showing > ~64-fold increase or decrease in transcript abundance between the two samples.

To obtain transcript levels of Y-linked genes from embryos, larvae, and adults, we used publicly available RNA-seq data (Additional file 1: Table S11). RNA-seq reads were mapped to the genome using HISAT2, and the per-base read coverage was calculated from the sorted bam files using samtools depth. Additionally, the bam files were processed with stringtie to generate sample-specific transcript annotation in GTF format [107]. Sample-specific GTF files were merged with stringtie to generate the final GTF. To obtain the gene model and transcript isoforms of *kdr*, stringtie annotated transcripts that covered the entire predicted ORF based on homology with *D. melanogaster para* [108] were used.

Identification of new genes and repeat elements

To identify incomplete or absent sequences in the most contiguous *An. stephensi* published assembly [18], the contigs from the draft assembly were aligned to the new assembly using nucmer [84] and alignments due to repeats were filtered using delta-filter to generate 1-to-1 mapping (delta-filter -r -q) between the two assemblies. The resulting delta file was converted into tab-separated alignment format using show-cords utility in MUMmer (v4). To identify TE sequences that are present in our assembly but absent in Jiang et al. (2014), we annotated the TEs in the latter using RepeatMasker and calculated the abundance of different classes of TEs (DNA, LTR, Long Interspersed Nuclear Elements or non-LTR) from the RepeatMasker output. Additionally, we identified TE sequences in our assembly that were either fragmented or absent in the Jiang et al. [18] contig assembly by looking for TE sequences that either failed to map or mapped only partially to the latter (bedtools intersect -v

-f 1.0 -a te.bed -b alignment.bed). To identify the genes that were fragmented or absent from the Jiang et al. [18] data, we combined two complementary approaches. First, we used the 1-to-1 genome alignment to identify genes that were split over >1 contig. Second, we mapped the annotated protein sequences from our study to the protein sequences reported in Jiang et al. using OrthoFinder v2.3.7 [103] and identified the transcripts that were present only in our study. We combined the unique genes found by each approach to calculate the total number of previously incomplete or missing genes. To rule out assembly errors in the new assembly as the cause of discrepancy between the two assemblies, 20 features disagreeing between the assemblies were randomly selected from each category and manually inspected in IGV. At least 3 long reads spanning an entire feature was used as evidence for correct assembly of the features.

Identification of Y contigs

To identify the putative Y contigs, male- and female-specific k-mers were identified from male and female paired-end Illumina reads using Jellyfish [109] (Additional file 1: Figure S11). The density of male and female k-mers for each contig was calculated, and the contigs showing more than twofold higher density of male-specific k-mers were designated as putative Y contigs. Interestingly, the *Serratia* genome we assembled also showed similar male k-mer enrichment as the Y contigs.

Experimental validation of Y-linked contigs

The k-mer-based approach employed to identify male-specific kmers that occur at a rate 20-fold higher than female-specific kmers in the *An. stephensi* scaffolds (Additional file 1: Figure S11). In order to verify putative Y-linked sequences, ten 2–3 day-old male or female *An. stephensi* mosquitoes per replicate were used for the experiment. Genomic DNA was extracted from each sample using DNeasy Blood and Tissue Kit (Cat # 69504). Gene-specific primers (Y15 forward (F)—ATT TTA GTT ATT TAG AGG CTT CGA, Y15 reverse (R)—GCG TAT GAT AGA AAC CGC AT; Y22 F—ATG CCA AAA AAA CGG TTG CG, Y22 R—CTA GCT CTT GTA AAG AGT CAC CTT; Y28 F—ATG CTA CAA AAC AGT GCC TT, Y28 R—TTA GGT CAG ATA TAG ACA CAG ACA CA) were designed based on the genome sequence to amplify ≥ 500 -bp products using polymerase chain reaction (PCR) reaction. The amplification was done using Q5 high fidelity 2X Master Mix (Cat # M0492). Amplicons were resolved in agarose gels and male versus female amplification was compared. The PCR products were gel eluted and Sanger sequenced (Additional file 1: Figure S11) (Genewiz) with

forward PCR primer. The identity of the sequencing was confirmed by aligning the amplicon sequences against the *An. stephensi* genome assembly using BLAST.

Identification of putative immune gene families

Studying the patterns of evolution in innate immune genes facilitate understanding the evolutionary dynamics of *An. stephensi* and pathogens they harbor. A total of 1649 manually curated immune proteins of *An. gambiae* (Agam 385), *Ae. aegypti* (Aaeg 422), *Cu. quinquefasciatus* (Cpip 495) and *D. melanogaster* (Dmel 347) in ImmunoDB (Additional file 8: Table S8) [110] were used as databases to search for the putative immune-related proteins in MAKER2-annotated protein sequences of the *An. stephensi* assembly using sequence alignment and phylogenetic orthology inference-based method in OrthoFinder v2.3.7. The number of single copy orthogroup/orthologous proteins (one-to-one) and co-orthologous and paralogous proteins in *An. stephensi* were identified (one-to-many; many-to-one; many-to-many) (Additional file 1: supplementary text) [111].

Supplementary Information

The online version contains supplementary material available at <https://doi.org/10.1186/s12915-021-00963-z>.

Additional file 1: Figure S1. Assembly coverage and heterozygosity. **Figure S2.** Distribution of repeats and estimates of new full length TEs. **Figure S3.** Tandem repeats in *An. stephensi*. **Figure S4.** Identification and annotation of microbial sequences. **Figure S5.** Comparison of assembly contiguity and completeness of genome assemblies of various mosquitoes and *D. melanogaster*. **Figure S6.** TE insertion in a functional gene and TE content of *An. stephensi* chromosomes. **Figure S7.** Y-linked genes supported by uniquely mapping Iso-Seq reads. **Figure S8.** The repertoire of putative immune-related proteins of *An. stephensi* that belong to 27 gene families. **Figure S9.** *kdr* gene of *An. stephensi* and presence of SV near the gene. **Figure S10.** Position of 20 physical map probes against their sequence identity to the new *An. stephensi* genome assembly. **Figure S11.** Identification and validation of Y-linked sequences. **Table S1.** Comparison of assembly statistics for *An. stephensi* older and new assemblies. **Table S9.** A list of 23 mosquito genomes and *D. melanogaster* reference genome from VectorBase/NCBI that were used to create a custom database for Kraken2 to classify *An. stephensi* contigs. **Table S11.** SRA accession of the publicly available RNAseq data used in this study.

Additional file 2: Table S2. Coordinates of TE sequences that were not found in the existing draft assembly of *An. stephensi*.

Additional file 3: Table S3. Coordinates of exonic TE sequences that were not found in the existing draft assembly of *An. stephensi*.

Additional file 4: Table S4. Coordinates of polymorphic TE sequences that are present in the scaffolds assigned to chromosomes but absent in the alternate haplotype sequences.

Additional file 5: Table S5 Coordinates of putative Y-linked genes supported by multiple uniquely mapping Iso-Seq reads.

Additional file 6: Table S6. Genes that are in the top 1% (>64 fold) category of the up- or down-regulated genes after blood feeding.

Additional file 7: Table S7. PBM up or down regulated genes that are either fragmented and missing repetitive sequences like TEs and tandem copies.

Additional file 8: Table S8. Classification of putative immune-related proteins of *An. stephensi*.

Additional file 9: Table S10. Details of physical map data used in this study.

Additional file 10: Table S12. List of 103 unclassified contigs identified as alternate haplotigs using BUSCO Diptera data set and the software Purge_dups.

Acknowledgements

We thank Judith Coleman for help with mosquito collection and Yi Liao for helpful discussions.

Authors' contributions

MC, AAJ, and JJE conceived the experimental approach; AA, PH, BK, and LTN performed laboratory research; MC, AR, SJ, KP, and SW performed bioinformatics analysis; SSr coordinated all activities at IBAB and contributed to the annotation pipeline. MC and AR wrote the manuscript draft; EB, SSU, AAJ, and JJE edited the draft. SSu coordinated the project activities between TIGS-India and TIGS-UC San Diego and was involved in planning the sequencing strategies. All authors contributed to the finalized version of the manuscript. The authors read and approved the final manuscript.

Funding

MC and JJE were supported by NIH grants K99GM129411 and R01GM123303-1, respectively. EB was supported by NIH grant R01 GM117321 and Paul G. Allen Frontiers Group Distinguished Investigators Award. AR and BK were supported by Tata Institute for Genetics and Society (TIGS), India. This work was supported in part by the TIGS-UCSD and TIGS, India. AAJ is a Donald Bren Professor at the University of California, Irvine.

Availability of data and materials

The sequenced strain is available at no cost from AAJ. The raw PacBio, Illumina, and Hi-C sequencing data and *An. stephensi* genome assembly were deposited in the NCBI BioProject database (accession number PRJNA629843) [112]. The annotations and other genomic features can be accessed at <http://3.93.125.130/tigs/anstephdb/> [113]. The final MAKER2 GFF file, the list of insecticide resistance genes, the list of immunity genes, and the list of novel transcripts are available at https://github.com/mahulchak/stephensi_genome [114]. All codes used in the study, including those used to make figures, are available at https://github.com/mahulchak/stephensi_genome [114].

Ethics approval and consent to participate

Not applicable.

Consent for publication

Not applicable.

Competing interests

EB has equity interest in two companies: Synbal Inc. and Agragene, Inc. These companies may potentially benefit from the research results. EB also serves on the Synbal Inc.'s Board of Directors and Scientific Advisory Board and on Agragene Inc.'s Scientific Advisory Board. The terms of these arrangements have been reviewed and approved by the University of California, San Diego, in accordance with its conflict of interest policies. All other authors declare no conflict of interest.

Author details

¹Department of Ecology and Evolutionary Biology, University of California, Irvine, CA 92697, USA. ²Section of Cell and Developmental Biology, University of California, San Diego, La Jolla, CA 92093-0335, USA. ³Tata Institute for Genetics and Society, Center at inStem, Bangalore, Karnataka 560065, India. ⁴Department of Microbiology & Molecular Genetics, University of California, Irvine, CA 92697, USA. ⁵Institute of Bioinformatics and Applied Biotechnology, Bangalore, KA 560100, India. ⁶Section of Molecular Biology, University of California, San Diego, La Jolla, CA 92093-0322, USA. ⁷Tata Institute for Genetics and Society, University of California, San Diego, La Jolla, CA 92093-0335, USA. ⁸Department of Molecular Biology & Biochemistry, University of California, Irvine, CA 92697, USA. ⁹Center for Complex Biological Systems, University of California, Irvine, CA 92697, USA.

Received: 17 November 2020 Accepted: 19 January 2021

Published online: 10 February 2021

References

- Roberts L. Mosquitoes and disease. *Science*. 2002;298:82–3.
- Institute of Medicine (US) Committee for the Study on Malaria Prevention and Control, Oaks SC Jr, Mitchell VS, Pearson GW, Carpenter C. *Vector biology, ecology, and control*. Washington (DC): National Academies Press (US); 1991.
- Cohuet A, Harris C, Robert V, Fontenille D. Evolutionary forces on Anopheles: what makes a malaria vector? *Trends Parasitol*. 2010;26:130–6.
- Holt RA, Subramanian GM, Halpern A, Sutton GG, Charlab R, Nusskern DR, et al. The genome sequence of the malaria mosquito *Anopheles gambiae*. *Science*. 2002;298:129–49.
- Severson DW, Behura SK. Mosquito genomics: progress and challenges. *Annu Rev Entomol*. 2012;57:143–66.
- The Anopheles gambiae 1000 Genomes Consortium, Clarkson CS, Miles A, Harding NJ, Lucas ER, Battey CJ, et al. Genome variation and population structure among 1,142 mosquitoes of the African malaria vector species *Anopheles gambiae* and *Anopheles coluzzii*. *bioRxiv*. 2019:864314. <https://doi.org/10.1101/864314>.
- Neafsey DE, Waterhouse RM, Abai MR, Aganezov SS, Alekseyev MA, Allen JE, et al. Mosquito genomics. Highly evolvable malaria vectors: the genomes of 16 Anopheles mosquitoes. *Science*. 2015;347:1258522.
- Waterhouse RM, Aganezov S, Anselmetti Y, Lee J, Ruzzante L, Reijnders MJMF, et al. Evolutionary superscaffolding and chromosome anchoring to improve Anopheles genome assemblies. *BMC Biol*. 2020;18:1.
- Sharma VP. Current scenario of malaria in India. *Parassitologia*. 1999;41:349–53.
- Seyfarth M, Khaireh BA, Abdi AA, Bouh SM, Faulde MK. Five years following first detection of *Anopheles stephensi* (Diptera: Culicidae) in Djibouti, Horn of Africa: populations established-malaria emerging. *Parasitol Res*. 2019;118:725–32.
- Sinka ME, Pironon S, Massey NC, Longbottom J, Hemingway J, Moyes CL, et al. A new malaria vector in Africa: predicting the expansion range of *Anopheles stephensi* and identifying the urban populations at risk. *Proc Natl Acad Sci*. 2020:202003976. <https://doi.org/10.1073/pnas.2003976117>.
- James AA. Gene drive systems in mosquitoes: rules of the road. *Trends Parasitol*. 2005;21:64–7.
- Gantz VM, Jasinskiene N, Tatarenkova O, Fazekas A, Macias VM, Bier E, et al. Highly efficient Cas9-mediated gene drive for population modification of the malaria vector mosquito *Anopheles stephensi*. *Proc Natl Acad Sci U S A*. 2015;112:E6736–43.
- Unckless RL, Clark AG, Messer PW. Evolution of resistance against CRISPR/Cas9 gene drive. *Genetics*. 2017;205:827–41.
- Chakraborty M, VanKuren NW, Zhao R, Zhang X, Kalsow S, Emerson JJ. Hidden genetic variation shapes the structure of functional elements in *Drosophila*. *Nat Genet*. 2018;50:20–5.
- Treangen TJ, Salzberg SL. Repetitive DNA and next-generation sequencing: computational challenges and solutions. *Nat Rev Genet*. 2011;13:36–46.
- Catteruccia F, Nolan T, Loukeris TG, Blass C, Savakis C, Kafatos FC, et al. Stable germline transformation of the malaria mosquito *Anopheles stephensi*. *Nature*. 2000;405:959–62.
- Jiang X, Peery A, Hall AB, Sharma A, Chen X-G, Waterhouse RM, et al. Genome analysis of a major urban malaria vector mosquito, *Anopheles stephensi*. *Genome Biol*. 2014;15:459.
- Chida AR, Ravi S, Jayaprasad S, Paul K, Saha J, Suresh C, et al. A near-chromosome level genome assembly of *Anopheles stephensi*. *Front Genet*. 2020;11:565626.
- Matthews BJ, Dudchenko O, Kingan SB, Koren S, Antoshechkin I, Crawford JE, et al. Improved reference genome of *Aedes aegypti* informs arbovirus vector control. *Nature*. 2018;563:501–7.
- Lewin HA, Robinson GE, Kress WJ, Baker WJ, Coddington J, Crandall KA, et al. Earth BioGenome Project: sequencing life for the future of life. *Proc Natl Acad Sci U S A*. 2018;115:4325–33.
- Hoskins RA, Carlson JW, Wan KH, Park S, Mendez I, Galle SE, et al. The Release 6 reference sequence of the *Drosophila melanogaster* genome. *Genome Res*. 2015;25:445–58.
- Waterhouse RM, Seppey M, Simão FA, Manni M, Ioannidis P, Kliuchnikov G, et al. BUSCO applications from quality assessments to gene prediction

- and phylogenomics. *Mol Biol Evol.* 2017. <https://doi.org/10.1093/molbev/msx319>.
24. Ghurye J, Koren S, Small ST, Redmond S, Howell P, Phillippy AM, et al. A chromosome-scale assembly of the major African malaria vector *Anopheles funestus*. *GigaScience.* 2019;8. <https://doi.org/10.1093/gigascience/gjz063>.
 25. Kingan SB, Heaton H, Cudini J, Lambert CC, Baybayan P, Galvin BD, et al. A high-quality de novo genome assembly from a single mosquito using PacBio sequencing. *Genes.* 2019;10. <https://doi.org/10.3390/genes10010062>.
 26. Compton A, Liang J, Chen C, Lukyanchikova V, Qi Y, Potters M, et al. The beginning of the end: a chromosomal assembly of the new world malaria mosquito ends with a novel telomere. *G3.* 2020;10:3811–9.
 27. Lukyanchikova V, Nuriddinov M, Belokopytova P, Liang J, Maarten J M, Ruzzante L, et al. Anopheles mosquitoes revealed new principles of 3D genome organization in insects. *bioRxiv.* 2020:114017. <https://doi.org/10.1101/2020.05.26.114017>.
 28. Hall AB, Papanthanos P-A, Sharma A, Cheng C, Akbari OS, Assour L, et al. Radical remodeling of the Y chromosome in a recent radiation of malaria mosquitoes. *Proc Natl Acad Sci U S A.* 2016;113:E2114–23.
 29. Wang S, Dos-Santos ALA, Huang W, Liu KC, Oshaghi MA, Wei G, et al. Driving mosquito refractoriness to *Plasmodium falciparum* with engineered symbiotic bacteria. *Science.* 2017;357:1399–402.
 30. Ribeiro JM, Kidwell MG. Transposable elements as population drive mechanisms: specification of critical parameter values. *J Med Entomol.* 1994;31:10–6.
 31. Macias VM, Jimenez AJ, Burini-Kojin B, Pledger D, Jasinskiene N, Phong CH, et al. nanos-Driven expression of piggyBac transposase induces mobilization of a synthetic autonomous transposon in the malaria vector mosquito, *Anopheles stephensi*. *Insect Biochem Mol Biol.* 2017;87:81–9.
 32. Jasinskiene N, Coates CJ, Benedict MQ, Cornel AJ, Rafferty CS, James AA, et al. Stable transformation of the yellow fever mosquito, *Aedes aegypti*, with the Hermes element from the housefly. *Proc Natl Acad Sci U S A.* 1998; 95:3743–7.
 33. Arensburger P, Kim Y-J, Orsetti J, Aluvihare C, O'Brochta DA, Atkinson PW. An active transposable element, Herves, from the African malaria mosquito *Anopheles gambiae*. *Genetics.* 2005;169:697–708.
 34. Chakraborty M, Chang C-H, Khost DE, Vedanayagam J, Adrion JR, Liao Y, et al. Evolution of genome structure in the *Drosophila simulans* species complex. *bioRxiv.* 2020;2020.02.27.968743. <https://doi.org/10.1101/2020.02.27.968743>.
 35. Volkenhoff A, Weiler A, Letzel M, Stehling M, Klämbt C, Schirmeier S. Glial glycolysis is essential for neuronal survival in *Drosophila*. *Cell Metab.* 2015; 22:437–47.
 36. Zhou S, Luoma SE, St Armour GE, Thakkar E, Mackay TFC, Anhold RRH. A *Drosophila* model for toxicogenomics: genetic variation in susceptibility to heavy metal exposure. *PLoS Genet.* 2017;13:e1006907.
 37. Robertson SE, Dockendorff TC, Leatherman JL, Faulkner DL, Jongs TA. Germ cell-less is required only during the establishment of the germ cell lineage of *Drosophila* and has activities which are dependent and independent of its localization to the nuclear envelope. *Dev Biol.* 1999;215:288–97.
 38. Prowse TA, Adikusuma F, Cassey P, Thomas P, Ross JV. A Y-chromosome shredding gene drive for controlling pest vertebrate populations. *Elife.* 2019; 8. <https://doi.org/10.7554/eLife.41873>.
 39. Muller HJ. The relation of recombination to mutational advance. *Mutat Res.* 1964;106:2–9.
 40. Hall AB, Qi Y, Timoshevskiy V, Sharakhova MV, Sharakhov IV, Tu Z. Six novel Y chromosome genes in *Anopheles* mosquitoes discovered by independently sequencing males and females. *BMC Genomics.* 2013;14:273.
 41. Kokoza V, Ahmed A, Woon Shin S, Okafor N, Zou Z, Raikhel AS. Blocking of *Plasmodium* transmission by cooperative action of Cecropin A and Defensin A in transgenic *Aedes aegypti* mosquitoes. *Proc Natl Acad Sci U S A.* 2010; 107:8111–6.
 42. Shane JL, Grogan CL, Cwalina C, Lampe DJ. Blood meal-induced inhibition of vector-borne disease by transgenic microbiota. *Nat Commun.* 2018;9:4127.
 43. Muller HM, Catteruccia F, Vizioli J, Dellatorre A, Crisanti A. Constitutive and blood meal-induced trypsin genes in *Anopheles gambiae*. *Exp Parasitol.* 1995;81:371–85.
 44. Marinotti O, Nguyen QK, Calvo E, James AA, Ribeiro JMC. Microarray analysis of genes showing variable expression following a blood meal in *Anopheles gambiae*. *Insect Mol Biol.* 2005;14:365–73.
 45. Hammond A, Galizi R, Kyrou K, Simoni A, Siniscalchi C, Katsanos D, et al. A CRISPR-Cas9 gene drive system targeting female reproduction in the malaria mosquito vector *Anopheles gambiae*. *Nat Biotechnol.* 2016;34:78–83.
 46. Rahman MM, Franch-Marro X, Maestro JL, Martin D, Casali A. Local Juvenile Hormone activity regulates gut homeostasis and tumor growth in adult *Drosophila*. *Sci Rep.* 2017;7:11677.
 47. Taracena ML, Bottino-Rojas V, Talyuli OAC, Walter-Nuno AB, Oliveira JHM, Angleró-Rodríguez YI, et al. Regulation of midgut cell proliferation impacts *Aedes aegypti* susceptibility to dengue virus. *PLoS Negl Trop Dis.* 2018;12: e0006498.
 48. Vizioli J, Bulet P, Charlet M, Lowenberger C, Blass C, Müller HM, et al. Cloning and analysis of a cecropin gene from the malaria vector mosquito, *Anopheles gambiae*. *Insect Mol Biol.* 2000;9:75–84.
 49. Kim W, Koo H, Richman AM, Seeley D, Vizioli J, Klocko AD, et al. Ectopic expression of a cecropin transgene in the human malaria vector mosquito *Anopheles gambiae* (Diptera: Culicidae): effects on susceptibility to *Plasmodium*. *J Med Entomol.* 2004;41:447–55.
 50. Vatandoost H, Hanafi-Bojd AA. Indication of pyrethroid resistance in the main malaria vector, *Anopheles stephensi* from Iran. *Asian Pac J Trop Med.* 2012;5:722–6.
 51. Safi NHZ, Ahmadi AA, Nahzat S, Warusavithana S, Safi N, Valadan R, et al. Status of insecticide resistance and its biochemical and molecular mechanisms in *Anopheles stephensi* (Diptera: Culicidae) from Afghanistan. *Malar J.* 2019;18:249.
 52. Yared S, Gebressielasie A, Damodaran L, Bonnell V, Lopez K, Janies D, et al. Insecticide resistance in *Anopheles stephensi* in Somali Region, Eastern Ethiopia. In: Review; 2019.
 53. Enayati AA, Vatandoost H, Ladonni H, Townson H, Hemingway J. Molecular evidence for a kdr-like pyrethroid resistance mechanism in the malaria vector mosquito *Anopheles stephensi*. *Med Vet Entomol.* 2003;17:138–44.
 54. Pedra JHF, McIntyre LM, Scharf ME, Pittendrigh BR. Genome-wide transcription profile of field- and laboratory-selected dichlorodiphenyltrichloroethane (DDT)-resistant *Drosophila*. *Proc Natl Acad Sci U S A.* 2004;101:7034–9.
 55. Mouchès C, Pasteur N, Bergé JB, Hyrien O, Raymond M, de Saint Vincent BR, et al. Amplification of an esterase gene is responsible for insecticide resistance in a California *Culex* mosquito. *Science.* 1986;233:778–80.
 56. Cridland JM, Macdonald SJ, Long AD, Thornton KR. Abundance and distribution of transposable elements in two *Drosophila* QTL mapping resources. *Mol Biol Evol.* 2013;30:2311–27.
 57. Chakraborty M, Emerson JJ, Macdonald SJ, Long AD. Structural variants exhibit widespread allelic heterogeneity and shape variation in complex traits. *Nat Commun.* 2019;10:4872.
 58. Qi Y, Wu Y, Saunders R, Chen X-G, Mao C, Biedler JK, et al. GUY1, a Y-linked embryonic signal, regulates dosage compensation in *Anopheles stephensi* by increasing X gene expression. *Elife.* 2019;8. <https://doi.org/10.7554/eLife.43570>.
 59. Bhaskar V, Courey AJ. The MADF-BESS domain factor Dip3 potentiates synergistic activation by Dorsal and Twist. *Gene.* 2002;299:173–84.
 60. Fakhouri M, Elalayi M, Sherling D, Hall JD, Miller E, Sun X, et al. Minor proteins and enzymes of the *Drosophila* eggshell matrix. *Dev Biol.* 2006;293: 127–41.
 61. Amehya DA, Chou W, Li J, Yan G, Gershon PD, James AA, et al. Proteomics reveals novel components of the *Anopheles gambiae* eggshell. *J Insect Physiol.* 2010;56:1414–9.
 62. Ahmed SMH, Maldera JA, Kronic D, Paiva-Silva GO, Pénalva C, Teleman AA, et al. Fitness trade-offs incurred by ovary-to-gut steroid signalling in *Drosophila*. *Nature.* 2020. <https://doi.org/10.1038/s41586-020-2462-y>.
 63. Gayathri V, Murthy PB. Reduced susceptibility to deltamethrin and kdr mutation in *Anopheles stephensi* Liston, a malaria vector in India. *J Am Mosq Control Assoc.* 2006;22:678–88.
 64. Prasad KM, Raghavendra K, Verma V, Velamuri PS, Pande V. Esterases are responsible for malathion resistance in *Anopheles stephensi*: a proof using biochemical and insecticide inhibition studies. *J Vector Borne Dis.* 2017;54: 226–32.
 65. Reimer L, Fondjo E, Patchoké S, Diallo B, Lee Y, Ng A, et al. Relationship between kdr mutation and resistance to pyrethroid and DDT insecticides in natural populations of *Anopheles gambiae*. *J Med Entomol.* 2014;45:260–6.
 66. Dykes CL, Kushwah RBS, Das MK, Sharma SN, Bhatt RM, Veer V, et al. Knockdown resistance (kdr) mutations in Indian *Anopheles culicifacies* populations. *Parasites & Vectors.* 2015;8. <https://doi.org/10.1186/s13071-015-0946-7>.
 67. Hollister JD, Gaut BS. Epigenetic silencing of transposable elements: a trade-off between reduced transposition and deleterious effects on neighboring gene expression. *Genome Res.* 2009;19:1419–28.

68. Hemingway J, Hawkes NJ, McCarroll L, Ranson H. The molecular basis of insecticide resistance in mosquitoes. *Insect Biochem Mol Biol*. 2004; 34:653–65.
69. Gantz VM, Bier E. The dawn of active genetics. *Bioessays*. 2016;38:50–63.
70. Carballar-Lejarazú R, James AA. Population modification of Anopheline species to control malaria transmission. *Pathog Glob Health*. 2017;111:424–35.
71. Nirmala X, Marinotti O, Sandoval JM, Phin S, Gakhar S, Jasinskiene N, et al. Functional characterization of the promoter of the vitellogenin gene, *AsVg1*, of the malaria vector, *Anopheles stephensi*. *Insect Biochem Mol Biol*. 2006; 36:694–700.
72. Chakraborty M, Baldwin-Brown JG, Long AD, Emerson JJ. Contiguous and accurate de novo assembly of metazoan genomes with modest long read coverage. *Nucleic Acids Res*. 2016;44:e147.
73. Koren S, Walenz BP, Berlin K, Miller JR, Bergman NH, Phillippy AM. Canu: scalable and accurate long-read assembly via adaptive k-mer weighting and repeat separation. *Genome Res*. 2017. <https://doi.org/10.1101/gr.215087.116>.
74. Chin C-S, Alexander DH, Marks P, Klammer AA, Drake J, Heiner C, et al. Nonhybrid, finished microbial genome assemblies from long-read SMRT sequencing data. *Nat Methods*. 2013;10:563–9.
75. Solares EA, Chakraborty M, Miller DE, Kalsow S, Hall K, Perera AG, et al. Rapid low-cost assembly of the *Drosophila melanogaster* reference genome using low-coverage, long-read sequencing. *G3*. 2018. <https://doi.org/10.1534/g3.118.200162>.
76. Lam K-K, LaButti K, Khalak A, Tse D. FinisherSC: a repeat-aware tool for upgrading de novo assembly using long reads. *Bioinformatics*. 2015;31: 3207–9.
77. Walker BJ, Abeel T, Shea T, Priest M, Abouelliel A, Sakthikumar S, et al. Pilon: an integrated tool for comprehensive microbial variant detection and genome assembly improvement. *PLoS One*. 2014;9:e112963.
78. Wood DE, Salzberg SL. Kraken: ultrafast metagenomic sequence classification using exact alignments. *Genome Biol*. 2014;15:R46.
79. Rani A, Sharma A, Rajagopal R, Adak T, Bhatnagar RK. Bacterial diversity analysis of larvae and adult midgut microflora using culture-dependent and culture-independent methods in lab-reared and field-collected *Anopheles stephensi*-an Asian malarial vector. *BMC Microbiol*. 2009;9:96.
80. Kumar S, Blaxter ML. Simultaneous genome sequencing of symbionts and their hosts. *Symbiosis*. 2011;55:119–26.
81. Salter SJ, Cox MJ, Turek EM, Calus ST, Cookson WO, Moffatt MF, et al. Reagent and laboratory contamination can critically impact sequence-based microbiome analyses. *BMC Biol*. 2014;12:87.
82. Laurence M, Hatzis C, Brash DE. Common contaminants in next-generation sequencing that hinder discovery of low-abundance microbes. *PLoS One*. 2014;9:e97876.
83. Morgulis A, Coulouris G, Raytselis Y, Madden TL, Agarwala R, Schäffer AA. Database indexing for production MegaBLAST searches. *Bioinformatics*. 2008;24:1757–64.
84. Marçais G, Delcher AL, Phillippy AM, Coston R, Salzberg SL, Zimin A. MUMmer4: a fast and versatile genome alignment system. *PLoS Comput Biol*. 2018;14:e1005944.
85. Cirimotich CM, Dong Y, Clayton AM, Sandiford SL, Souza-Neto JA, Mulenga M, et al. Natural microbe-mediated refractoriness to *Plasmodium* infection in *Anopheles gambiae*. *Science*. 2011;332:855–8.
86. Boissière A, Tchioffo MT, Bachar D, Abate L, Marie A, Nsango SE, et al. Midgut microbiota of the malaria mosquito vector *Anopheles gambiae* and interactions with *Plasmodium falciparum* infection. *PLoS Pathog*. 2012;8:e1002742.
87. Osei-Poku J, Mbogo CM, Palmer WJ, Jiggins FM. Deep sequencing reveals extensive variation in the gut microbiota of wild mosquitoes from Kenya. *Mol Ecol*. 2012;21:5138–50.
88. Karpe YA, Kanade GD, Pingale KD, Arankalle VA, Banerjee K. Genomic characterization of *Salmonella* bacteriophages isolated from India. *Virus Genes*. 2016;52:117–26.
89. Chen S, Blom J, Walker ED. Genomic, physiologic, and symbiotic characterization of *Serratia marcescens* strains isolated from the mosquito *Anopheles stephensi*. *Front Microbiol*. 2017;8:1483.
90. Durand NC, Shamim MS, Machol I, Rao SSP, Huntley MH, Lander ES, et al. Juicer provides a one-click system for analyzing loop-resolution Hi-C experiments. *Cell Syst*. 2016;3:95–8.
91. Dudchenko O, Batra SS, Omer AD, Nyquist SK, Hoeger M, Durand NC, et al. De novo assembly of the *Aedes aegypti* genome using Hi-C yields chromosome-length scaffolds. *Science*. 2017;356:92–5.
92. Garrison E, Marth G. Haplotype-based variant detection from short-read sequencing. *arXiv [q-bio.GN]*. 2012; <http://arxiv.org/abs/1207.3907>.
93. Mikheenko A, Saveliev V, Gurevich A. MetaQUAST: evaluation of metagenome assemblies. *Bioinformatics*. 2016;32:1088–90.
94. Guan D, McCarthy SA, Wood J, Howe K, Wang Y, Durbin R. Identifying and removing haplotypic duplication in primary genome assemblies. *Bioinformatics*. 2020;36:2896–8.
95. Ramírez F, Bhardwaj V, Arrigoni L, Lam KC, Grüning BA, Villaveces J, et al. High-resolution TADs reveal DNA sequences underlying genome organization in flies. *Nat Commun*. 2018;9:189.
96. Jost E, Mameli M. DNA content in nine species of Nematocera with special reference to the sibling species of the *Anopheles maculipennis* group and the *Culex pipiens* group. *Chromosoma*. 1972;37:201–8.
97. Gregory TR. Animal genome size database. 2020. <http://www.genomesize.com>.
98. Ou S, Su W, Liao Y, Chougule K, Agda JRA, Hellinga AJ, et al. Benchmarking transposable element annotation methods for creation of a streamlined, comprehensive pipeline. *Genome Biol*. 2019;20:275.
99. Benson G. Tandem repeats finder: a program to analyze DNA sequences. *Nucleic Acids Res*. 1999;27:573–80.
100. Gordon SP, Tseng E, Salamov A, Zhang J, Meng X, Zhao Z, et al. Widespread polycistronic transcripts in fungi revealed by single-molecule mRNA sequencing. *PLoS One*. 2015;10:e0132628.
101. Wyman D, Balderrama-Gutierrez G, Reese F, Jiang S, Rahmanian S, Zeng W, et al. A technology-agnostic long-read analysis pipeline for transcriptome discovery and quantification. *bioRxiv*. 2019:672931. <https://doi.org/10.1101/672931>.
102. Holt C, Yandell M. MAKER2: an annotation pipeline and genome-database management tool for second-generation genome projects. *BMC Bioinformatics*. 2011;12:491.
103. Emms DM, Kelly S. OrthoFinder: phylogenetic orthology inference for comparative genomics. *Genome Biol*. 2019;20:238.
104. Mi H, Muruganujan A, Ebert D, Huang X, Thomas PD. PANTHER version 14: more genomes, a new PANTHER GO-slim and improvements in enrichment analysis tools. *Nucleic Acids Res*. 2019;47:D419–26.
105. Li H. Minimap2: pairwise alignment for nucleotide sequences. *Bioinformatics*. 2018;34:3094–100.
106. Quinlan AR, Hall IM. BEDTools: a flexible suite of utilities for comparing genomic features. *Bioinformatics*. 2010;26:841–2.
107. Pertea M, Kim D, Pertea GM, Leek JT, Salzberg SL. Transcript-level expression analysis of RNA-seq experiments with HISAT, StringTie and Ballgown. *Nat Protoc*. 2016;11:1650–67.
108. dos Santos G, Schroeder AJ, Goodman JL, Strelets VB, Crosby MA, Thurmond J, et al. FlyBase: introduction of the *Drosophila melanogaster* Release 6 reference genome assembly and large-scale migration of genome annotations. *Nucleic Acids Res*. 2015;43(Database issue):D690–7.
109. Marçais G, Kingsford C. A fast, lock-free approach for efficient parallel counting of occurrences of k-mers. *Bioinformatics*. 2011;27:764–70.
110. Waterhouse RM, Kriventseva EV, Meister S, Xi Z, Alvarez KS, Bartholomay LC, et al. Evolutionary dynamics of immune-related genes and pathways in disease-vector mosquitoes. *Science*. 2007;316:1738–43.
111. Nehme NT, Liégeois S, Kele B, Giammarinaro P, Pradel E, Hoffmann JA, et al. A model of bacterial intestinal infections in *Drosophila melanogaster*. *PLoS Pathog*. 2007;3:e173.
112. Chakraborty M, Ramaiah A, Adolphi A, Halas P, Kaduskar B, Thanh LN, et al. *Anopheles stephensi* and its symbiont *Serratia marcescens* Genome sequencing and assembly. NCBI Bioproject PRJNA629843. 2020. <https://www.ncbi.nlm.nih.gov/bioproject/629843>.
113. Chakraborty M, Ramaiah A, Adolphi A, Halas P, Kaduskar B, Thanh LN, et al. *Anopheles stephensi* genome hub. 2020. <http://3.93.125.130/tigs/anstephdb/>.
114. Chakraborty M, Ramaiah A, Adolphi A, Halas P, Kaduskar B, Thanh LN, et al. *Anopheles stephensi* genomic data analysis. GitHub repository for scripts and intermediate data files for *Anopheles stephensi* genome analysis. 2020. https://github.com/mahulchak/stephensi_genome.
115. Campbell MS, Holt C, Moore B, Yandell M. Genome annotation and curation using MAKER and MAKER-P. *Curr Protoc Bioinformatics*. 2014;48:4.11.1–39.

Publisher's Note

Springer Nature remains neutral with regard to jurisdictional claims in published maps and institutional affiliations.